



Renaissance Lac Brome Lake

Association pour la conservation du lac et de son bassin versant

Association for the conservation of the lake and its watershed

Downspout Disconnection

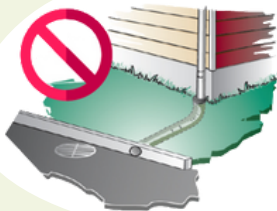
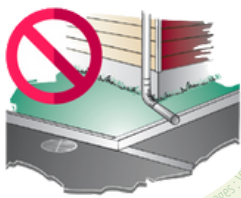
Do your gutters comply with regulations?

Does the water from your gutters flow directly or indirectly into the sewer system through a foundation drain, a street surface, or a municipal ditch?

Yes No

Excerpt from Zoning By-Law no. 596 Town of Brome Lake, art. 90:
"Runoff water must be discharged towards the shrubby and arboreal surfaces of the property"

Non-regulatory examples:



Water from connected gutters flows into the town's sewer system and causes...



Treatment plants and pumping stations to overload, resulting in untreated water spilling into waterways and additional stormwater treatment costs.



An increase in the flow of water at exit points, aggravating erosion which disturbs sensitive natural environments.

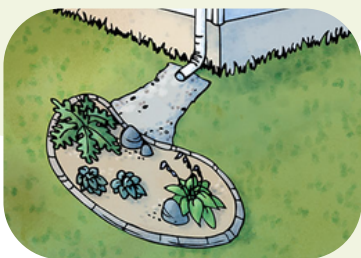


Furthermore, gutters connected to foundation drains can be overburdened causing backflows in basements that can seriously damage a house's foundations.

Alternative solutions

RAIN GARDEN

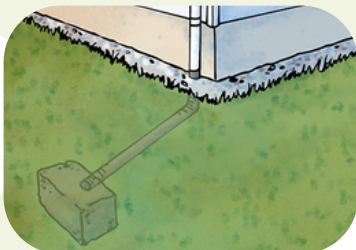
Image Source: Ville de Québec



A rain garden is not only functional but attractive as well

PERCOLATING WELL

Neither seen nor heard, percolating wells are effective and discrete



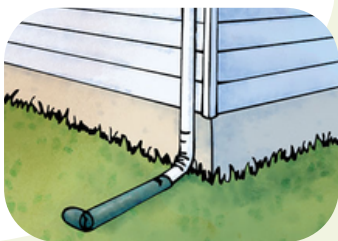
RAIN BARREL



Water captured by rain barrels has several uses. To be truly effective, it must be emptied between rain events

SPLASH BLOCK

The use of splash blocks avoids water accumulation and protects the foundations of your home



Contact us here

E-mail: info.renaissancelbl.com

Phone: 450-242-2784 **Patrol:** 450-405-2286

As part of the Educational Patrol project of Renaissance Brome Lake, possible thanks to the financial support of



VILLE DE LAC-BROME
TOWN OF BROME LAKE